

Skyline – Skyline ELS – Skyline glass

The rooflights for architectural highlights



- Variable version and design
- Skyline ELS for excellent thermal insulation
- Skyline glass sets new standards in design and optics
- Skyline ELS – technological leadership
– outperforms the new EnEV stipulations



Aesthetics and functionality in magnificent symbiosis

Skyline rooflights offer a great variety of design versions, e.g. for angles of inclination of 15° to 60° and openings of 1.50 m up to 7.50 m. Skyline can be extended in an unbroken line to form a wall rooflight, therefore allowing continuous light transfer. With Skyline the building transforms itself into a gleaming light performance.

The standard variant of Skyline with single-skin polycarbonate sheet embodies cost-effectiveness and longevity.

Skyline ELS – the technology leader among double-skin continuous rooflights – delivers convincingly superlative thermal insulation properties, high soundproofing values and the scope for integrating the ELS Sunbloc sunblinds.

Skyline glass meets the most demanding of requirements in respect of design and optics, whether as solar protection or thermal insulation glass, glare-free glazing, or as glass with an aerogel filling for optimum light distribution.

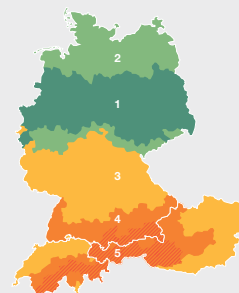
With its wide variety of equipment features, Skyline can be integrated in virtually every daylight concept – whether for construction or for renovation projects. With INDU LIGHT as the professional, high-performance partner, every challenge can be met and mastered.

Skyline – cost-aware standard with enhanced longevity

Even in its standard version, featuring a single-skin multiwall PC sheet design, Skyline embodies the consistently high quality standard of INDU LIGHT. Indeed, high-quality and tested materials are among the fundamental criteria governing INDU LIGHT products. The polycarbonates used are all sourced from leading manufacturers, all with a long track record on the marketplace.

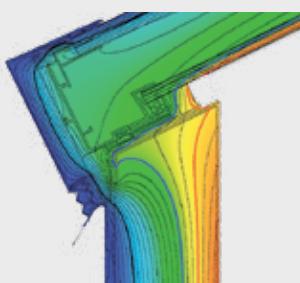
Solar zone dimensioning

More stringent environmental factors drive a process of continuous adaptation to assure optimum quality on a long-term basis, regardless of site location. In response to rising levels of UV exposure, INDU LIGHT is now for the first time ever dimensioning all of its rooflights with polycarbonate sheets to contend with prevailing levels of UV radiation. This decision is based on the solar zone map that divides the globe into solar zones 1–5, representing large regional differences.



Skyline ELS – the most energy-efficient ELS technology from INDU LIGHT

Skyline is optionally available in its innovative ELS version. With ELS technology, a new era is dawning in the field of energy efficiency. With the highest level of thermal protection in its field with a U_{total} of up to 0.8 W/m²K and



superlative soundproofing values of up to 33 dB, Skyline ELS is progressing to hitherto unachieved heights at the top of the league table.

Skyline ELS Sunbloc – sunblinds, glare shield and climate control

Another plus factor: the ELS Sunbloc sunblinds that can be integrated in the double-skin structure provide optimum light control to suit the time of year and prevailing requirements.

Thanks to the protected installation between the multiwall polycarbonate sheets, ELS Sunbloc is unaffected by internal and external factors – from sun, rain, snow and wind as well as from emissions from production processes.



Skyline glass – design-oriented, innovative, functional

Wherever distinctive glass optics with straight-line aesthetics and lean geometry is called for, wherever a high proportion of daylight is required and where sunlight should flood through the building, Skyline in glass delivers impressively theatrical lighting effects. In industrial construction as well as in railway stations and airports, in shopping centres, sports halls and in administration buildings.

As well as glazing for thermal insulation and sun block purposes, glazing is also available with integrated sun block elements or with glare-reduction fillings as well as with photovoltaic cells to generate power. This enables architects, planners and construction engineers to explore and implement a vast array of innovative design options.



Skyline glass is created using a stick system with a proven track record extending back over decades, made from aluminium and capable of being installed at various angles to form type-tested glass wing sections, meeting all requirements for a tested natural smoke extractor unit compliant with the EN 12101-2 standard.

System components

Enhance all Skyline products with natural smoke and heat exhaust ventilators (SHEV) as part of a SHEV unit and add the appropriate material version to a wide variety of ventilation devices. The INDU LIGHT standard provides information about our extended portfolio of products and services, accessories and technical details.







Challenging solutions call for a professional and highly-capable partner

With our extensive team of engineers, we can ensure that your requirements and wishes are taken into account on an individual basis and are then implemented with our products. We really come into our own at the point where other providers fall by the wayside – when customised solutions are being sought. As well as developing and implementing individual products, our focus lies in the provision of comprehensive advice to architects, planners and metal workers.

Not least, our flexibility and speed of installation help to ensure that our customers are satisfied, as well as being responsible for the success of our company.

Technical data for Skyline, Skyline ELS, Skyline glass

Modern roof architecture for new buildings and renovations.

	 Skyline	 Skyline ELS single-skin	 Skyline ELS double-skin	 Skyline glass
U_{total} W/m²K	2.5 – 1.8	1.8 – 0.9	1.1 – 0.8	1.3 – 1.1
Shading	inside / outside	inside / outside	ELS Sunbloc can be integrated	inside / outside
Soundproofing value	up to 33 dB			
Construction materials class	B2 non-burning dripping, optional B1			A1
Hail protection class	HW3, optional HW5			–
Fall-through protection	during installation, optionally permanent			–
Light transmission	variable in acc. with daylight calculation			

The values indicated are standard values and meet current technological standards. Values and properties may vary from this, in which case please contact INDU LIGHT directly.



INDU LIGHT

Produktion & Vertrieb GmbH
Willi-Brundert-Strasse 3
D-06132 Halle/Saale
Tel.: +49 (0)345 7 72 96 - 0
Fax +49 (0)345 7 72 96 - 11
E-mail halle@indu-light.de
www.indu-light.de

INDU LIGHT

Produktion & Vertrieb GmbH
Lauterbachstrasse 38
D-78586 Deilingen
Tel.: +49 (0)7426 52 70 - 0
Fax: +49 (0)7426 38 11
E-mail deilingen@indu-light.de

INDU LIGHT

West Vertrieb GmbH
Schützenwall 30
D-48653 Coesfeld
Tel.: +49 (0)2541 92 62 - 0
Fax: +49 (0)2541 92 62 - 12
E-mail coesfeld@indu-light.de

INDU LIGHT

Indu-Light AG / SA
Industriestrasse 23
CH-6215 Beromünster LU
Tel.: +41 (0)41 932 41 00
Fax +41 (0)41 932 41 05
E-mail info@indu-light.ch
www.indu-light.ch

INDU LIGHT

Tageslicht- und BrandschutzTechnik Vertriebs GmbH
D'Orsay-Gasse 4/1
A-1090 Vienna
Tel.: +43 (0)1 319 25 00
Fax: +43 (0)1 319 25 00 25
E-mail contact@indu-light.at
www.indu-light.at

